



Agenda
Gig Harbor City Council Study Session
Thursday, January 7, 2021
3:00 p.m.

The public link to join the meeting is <https://zoom.us/j/96090444575>
Or Call-in: (253) 215-8782
Meeting ID: 960 9044 4575

[Call to order, roll call](#)

Agenda Items

1. City Forms of Government – MRSC Presentation _____
2. Executive Session per RCW 42.30.110(1)(i). *No action to be taken after the session.*

Adjournment

FORMS OF MUNICIPAL GOVERNMENT

Gig Harbor, January 7, 2021



Presenter



Tracy Burrows

Executive Director

Municipal Research & Service Center of Washington

Form of Government Choice



Choosing the form of government is **not** a matter of **how much** legislative and/or administrative authority the city will have.



The most significant differences stem from the **distribution of authority** between the legislative and executive officials.

Authority Distribution Between Forms



EXECUTIVE POWERS AND AUTHORITY

Spokesperson

Makes proposals to the Council

Proposes budgets

Administers day to day operations

Appoints and dismisses employees

POWERS AND AUTHORITY THAT VARY BY FORM

Setting of policy agenda

Chair of Council

Selection of chief administrative officer

Executive veto power

Appointments to Boards and Commissions

Confirmation of key appointed positions

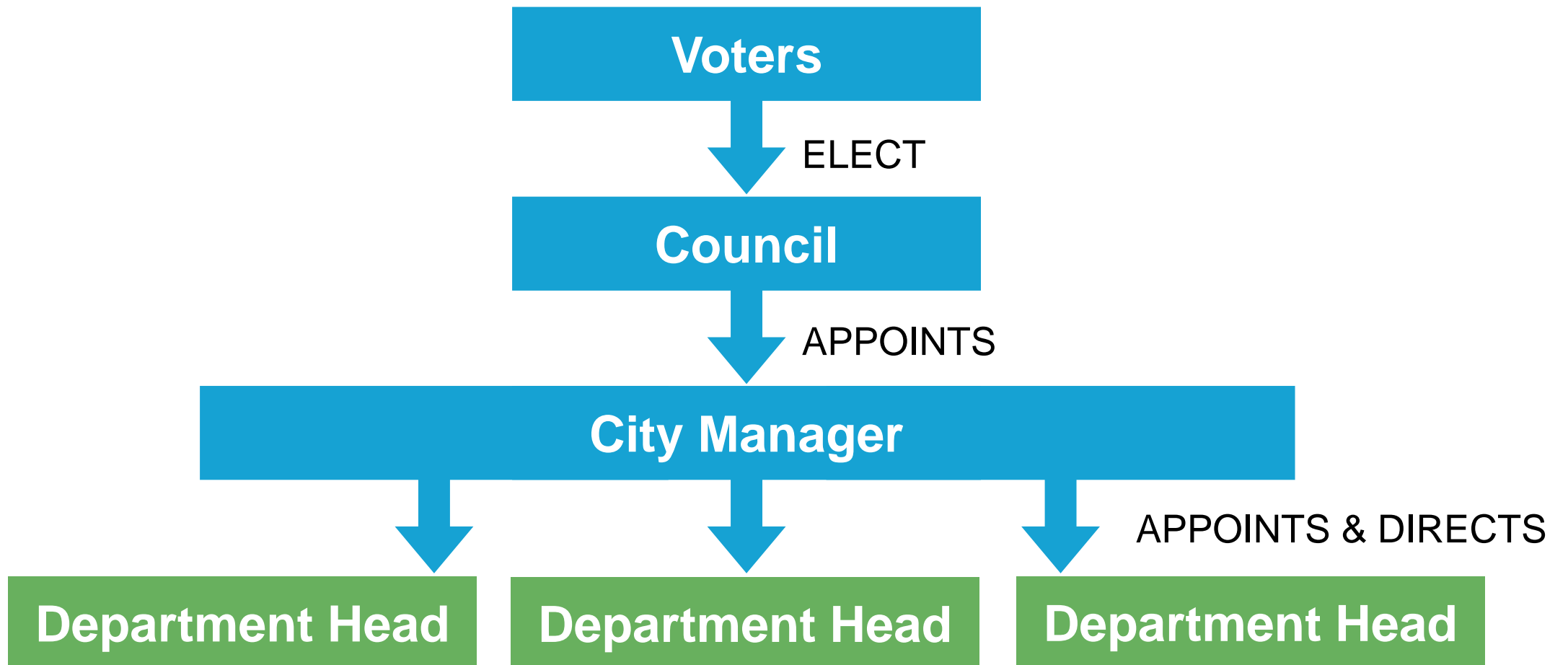
Contracting and spending authority

LEGISLATIVE POWERS AND AUTHORITY

Adopts budgets, ballot proposals and city code/ordinances

Directs executive to provide reporting

Council-Manager Plan



Typical Authority Distribution: Council – Manager Form



EXECUTIVE POWERS AND AUTHORITY

Spokesperson

Makes proposals
to the Council

Proposes budgets

Administers day to
day operations

Appoints and
dismisses employees

POWERS AND AUTHORITY THAT VARY BY FORM

Setting of policy agenda

Chair of Council

Selection of chief
administrative officer

No Executive veto power

Appointments to Boards
and Commissions

Confirmation of key
appointed positions

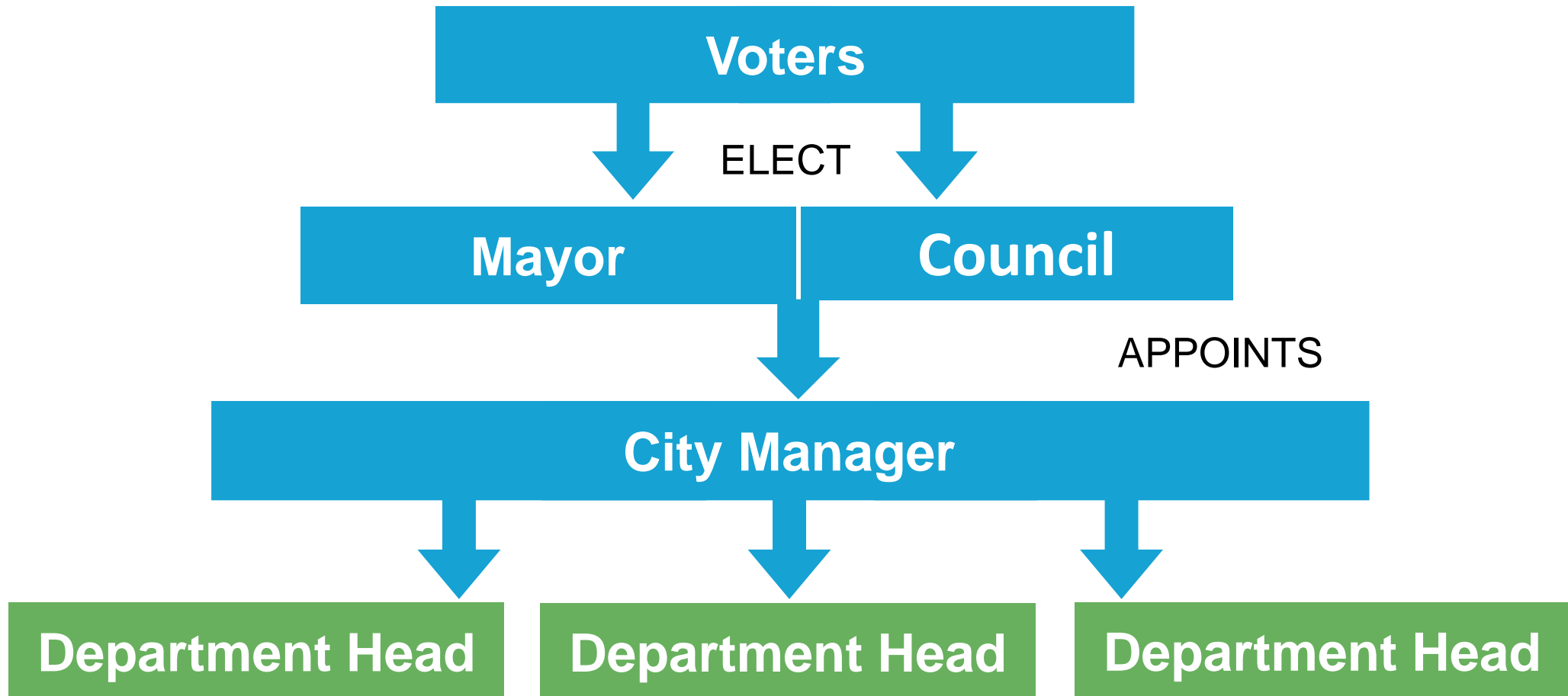
Contracting and
spending authority

LEGISLATIVE POWERS AND AUTHORITY

Adopts budgets, ballot
proposals and city
code/ordinances

Directs executive to
provide reporting

Council-Manager Plan With Directly Elected Mayor



Typical Authority Distribution: Directly Elected Mayor, Council – Manager Form



EXECUTIVE POWERS AND AUTHORITY

Spokesperson

Makes proposals to the Council

Proposes budgets

Administers day to day operations

Appoints and dismisses employees

POWERS AND AUTHORITY THAT VARY BY FORM

Setting of policy agenda

Chair of Council

Selection of chief administrative officer

No Executive veto power

Appointments to Boards and Commissions

Confirmation of key appointed positions

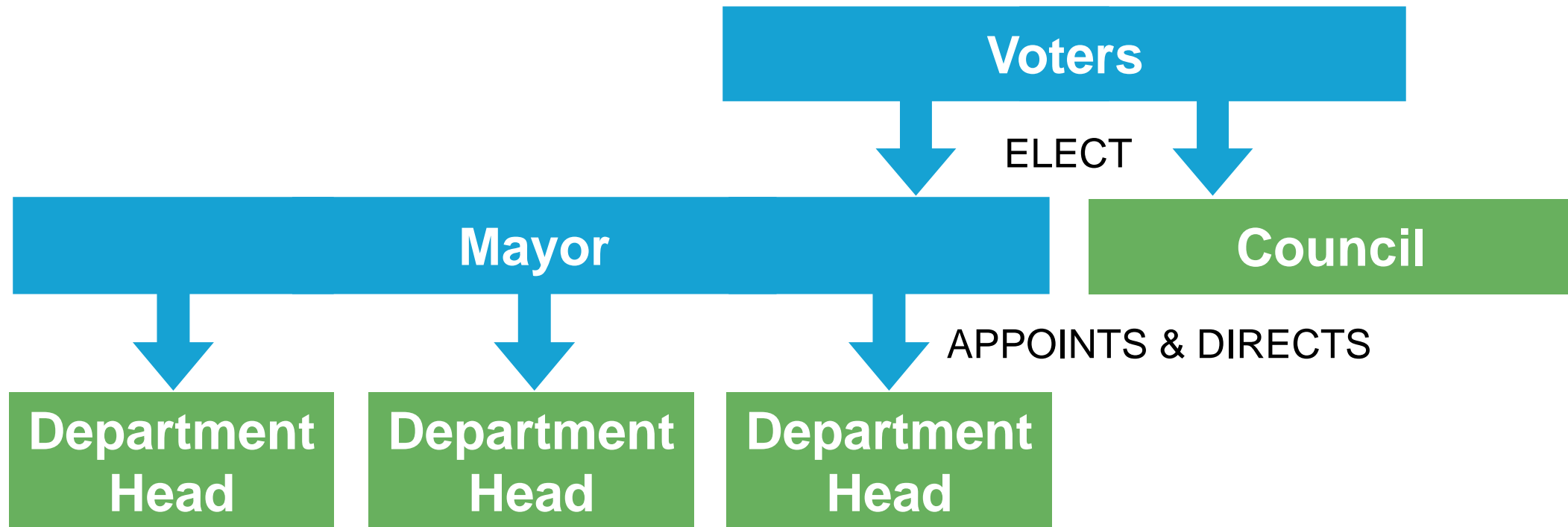
Contracting and spending authority

LEGISLATIVE POWERS AND AUTHORITY

Adopts budgets, ballot proposals and city code/ordinances

Directs executive to provide reporting

Mayor-Council Plan



Typical Authority Distribution: Mayor – Council Form



EXECUTIVE POWERS AND AUTHORITY

Spokesperson

Makes proposals
to the Council

Proposes budgets

Administers day to
day operations

Appoints and
dismisses employees

POWERS AND AUTHORITY THAT VARY BY FORM

Setting of policy agenda

Chair of Council

Selection of chief
administrative officer

Executive veto power

Appointments to Boards
and Commissions

Confirmation of key
appointed positions

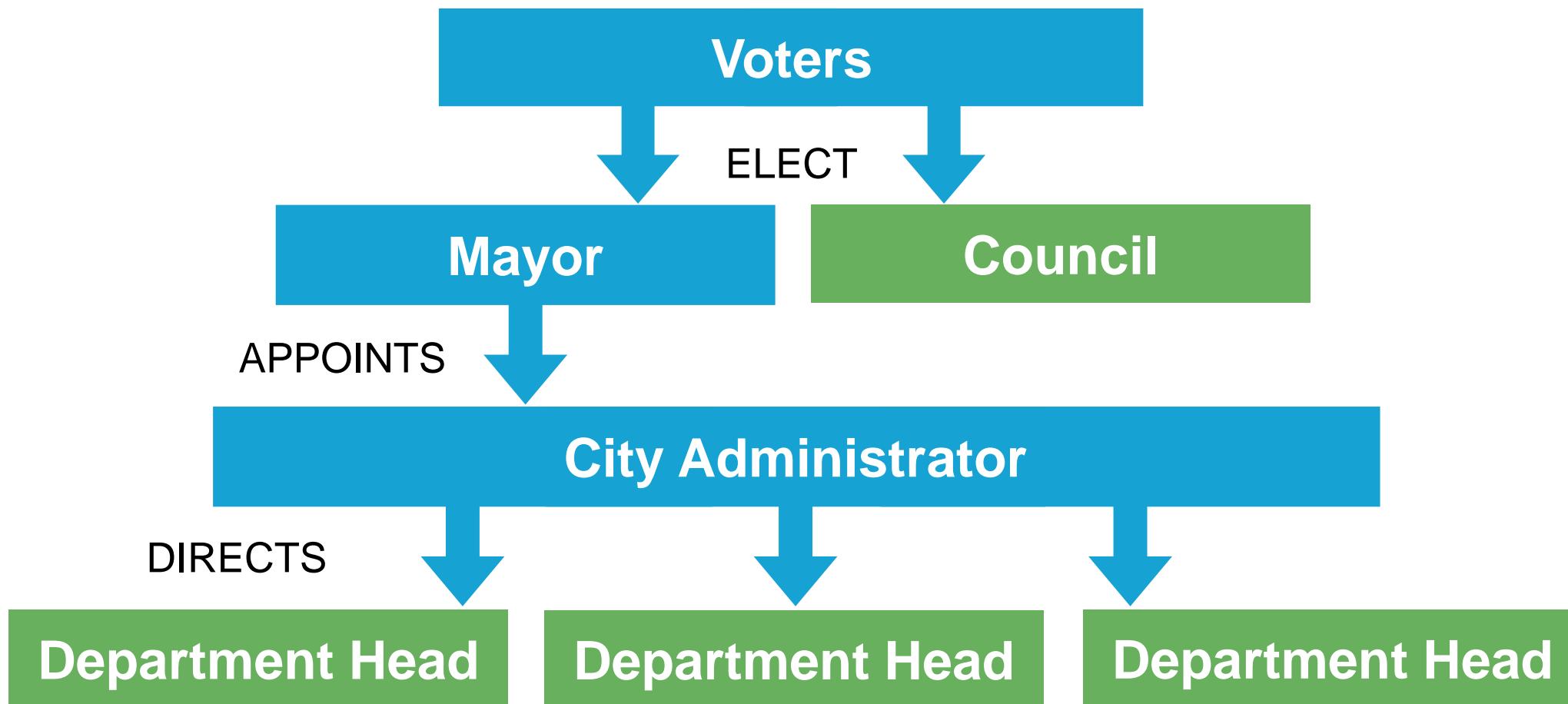
Contracting and
spending authority

LEGISLATIVE POWERS AND AUTHORITY

Adopts budgets, ballot
proposals and city
code/ordinances

Directs executive to
provide reporting

Mayor Council Plan With City Administrator



Typical Authority Distribution: Mayor – Council Form



EXECUTIVE POWERS AND AUTHORITY

Spokesperson

Makes proposals
to the Council

Proposes budgets

Administers day to
day operations

Appoints and
dismisses employees

POWERS AND AUTHORITY THAT VARY BY FORM

Setting of policy agenda

Chair of Council

Selection of chief
administrative officer

Executive veto power

Appointments to Boards
and Commissions

Confirmation of key
appointed positions

Contracting and
spending authority

LEGISLATIVE POWERS AND AUTHORITY

Adopts budgets, ballot
proposals and city
code/ordinances

Directs executive to
provide reporting

Considerations in Choice of Form of Government



- Capacity to determine and implement vision and direction for the community
- Responsiveness and accountability
- Appropriate role of politics in administration
- Professional management and stability
- Facilitation of civic engagement
- Effectiveness and efficiency
- Political harmony

Transition to Council-Manager Form – What Shifts?



- Selection of chief executive
- Setting of policy agenda
- Appointment of department heads
- Responsibility for day to day operations
- Development of budget and legislative proposals
- Attending/voting members at council meetings
- Veto authority



Comparison of Similar Size Cities

CITY	POPULATION	COUNTY	FORM OF GOVERNMENT	CITY MANAGER/ADMINISTRATOR POSITION
Cheney	12,640	Spokane	Mayor-Council	City Administrator
Enumclaw	12,610	King	Mayor-Council	City Administrator
Kelso	12,340	Cowlitz	Council-Manager	City Manager
Edgewood	12,070	Pierce	Mayor-Council	Asst. City Administrator
Sedro-Wooley	11,890	Skagit	Mayor-Council	City Supervisor
Poulsbo	11,550	Kitsap	Mayor-Council	Mayor
Liberty Lake	11,500	Spokane	Mayor-Council	City Administrator
Gig Harbor	11,240	Pierce	Mayor-Council	City Administrator
Grandview	11,230	Yakima	Mayor-Council	City Administrator
Shelton	10,390	Mason	Council-Manager	City Manager
Sumner	10,360	Pierce	Mayor-Council	City Administrator
Snohomish	10,240	Snohomish	Mayor-Council	City Administrator
Fife	10,200	Pierce	Council-Manager	City Manager
Airway Heights	10,010	Spokane	Council-Manager	City Manager
College Place	9,780	Walla Walla	Mayor-Council	City Administrator

Of the 14 cities around Gig Harbor's population, 71% have Mayor-Council and 29% have the Council-Manager form of government.

Changing the Form of Government



CITIES CHANGING FROM MAYOR-COUNCIL TO COUNCIL-MANAGER FORM

- **Snohomish** (1972, reverted 2016)
- **Bothell** (1973)
- **Toppenish** (1973)
- **Lacey** (1973)
- **Ferndale** (1981, reverted 1999)
- **Blaine** (1982)
- **Goldendale** (1986, reverted 1994)
- **Fircrest** (1988)
- **Sequim** (1995)
- **Ephrata** (1995, reverted 2003)
- **Battle Ground** (1996)
- **Port Townsend** (1998)
- **Fife** (1999)
- **Carnation** (2000)
- **Ridgefield** (2000)
- **Airway Heights** (2002)
- **Bainbridge Island** (2009)
- **Union Gap** (2013)
- **Granite Falls** (2015)
- **Washougal** (2018)

Changing the Form of Government



Any city may change its form of government.

Initiated either by a resolution adopted by the city council or by a petition process.

Followed by an election on the issue of reorganizing under a different form of government.

Changing the Form of Government



Timing of vote on change in form is set by city council – the next general election at the latest

Change in form of government is effective upon certification of the election results

Mayor becomes 8th Councilmember until the end of their term

Thank you!

